

Analogue tools and Farms of the Future approach

CCAFS theme 1

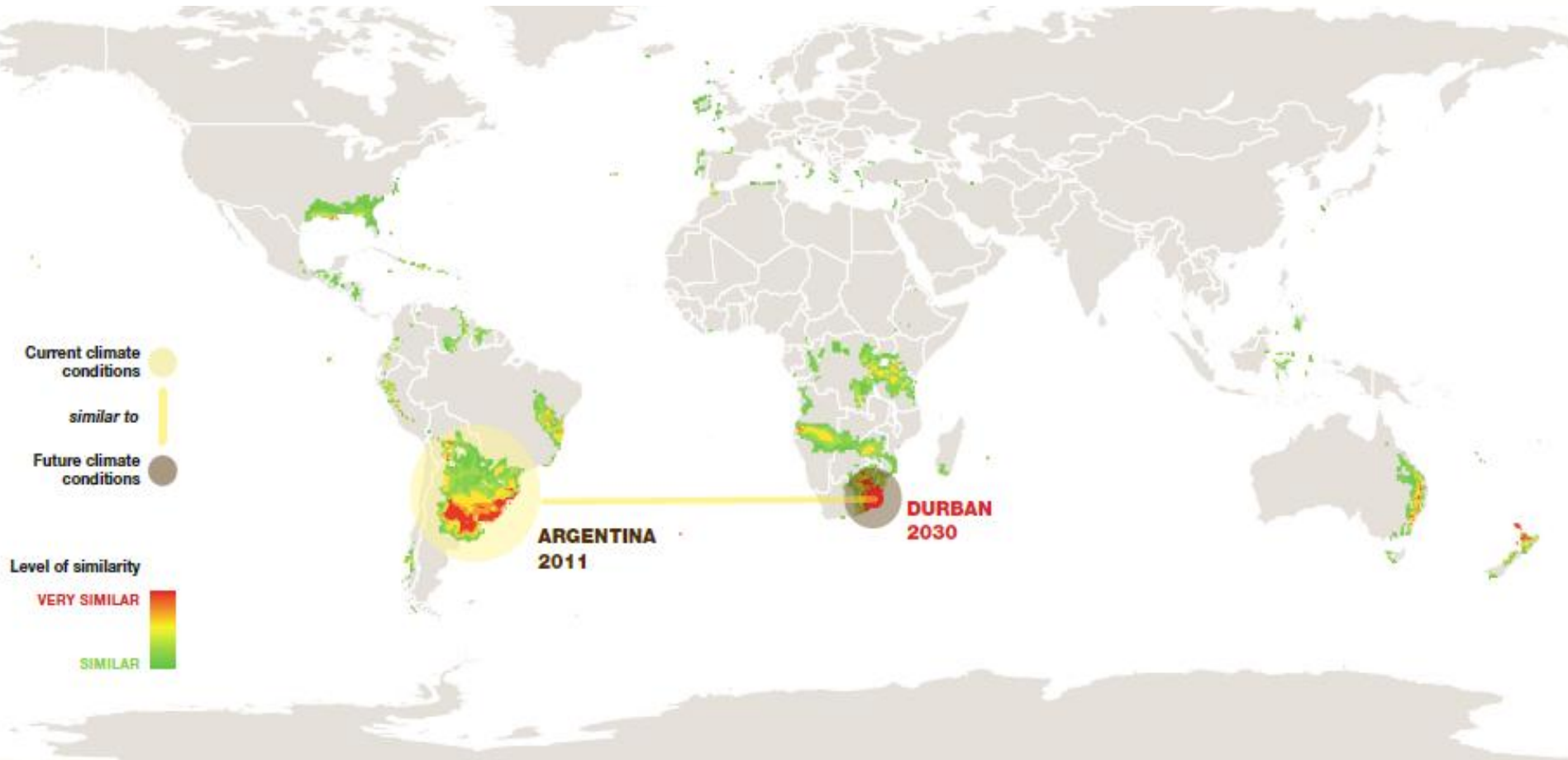
Addis Abeba, Nov 20 2012

Spotlight on : The Climate Analogue Tool

The world becomes a Living Lab for Adaptation in agriculture



The 2030 climate of a maize-growing area near Durban will correspond to the current climate of a major maize-growing area in Argentina. Growers in Durban can learn from these analogous climates how to adapt as their climate shifts.

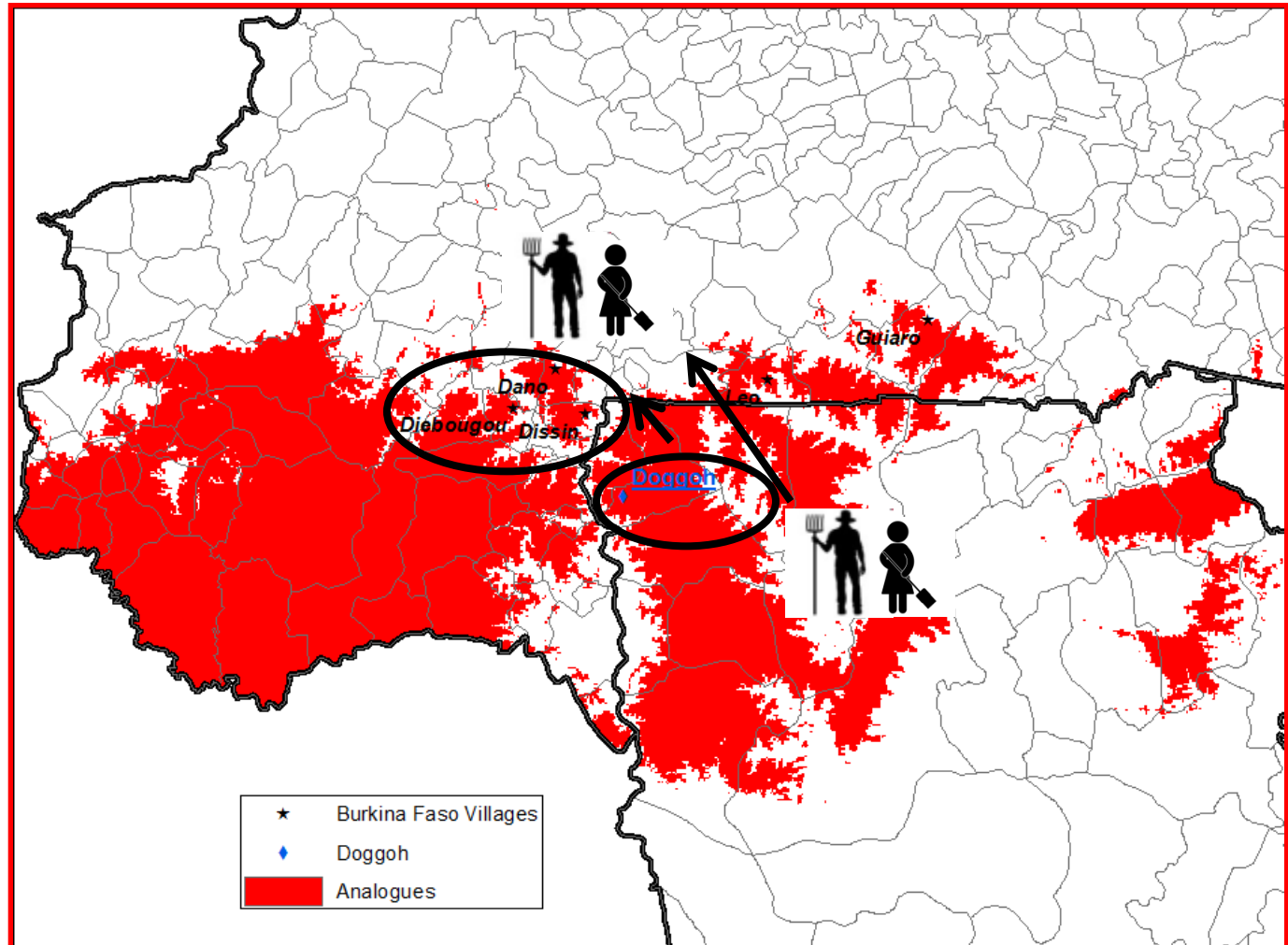
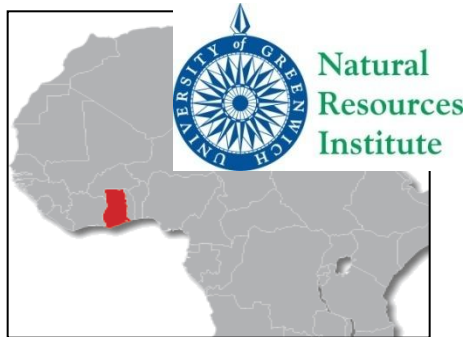


For more info visit: <http://ccafs.cgiar.org/news/media-centre/climateanalogues>
Online tool interface: <http://gismap.ciat.cgiar.org/Analogues/>

Farms of the future

The Concept

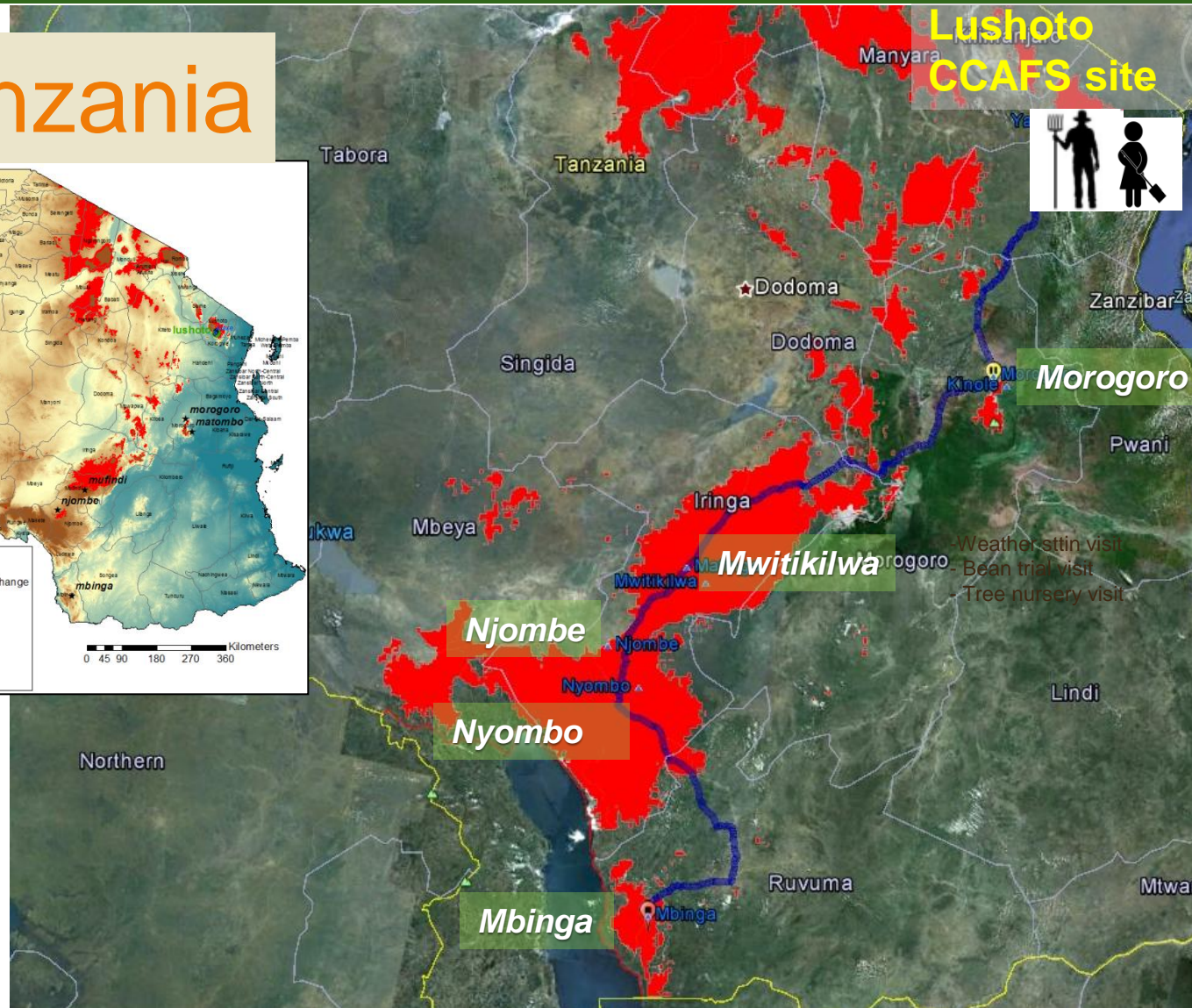
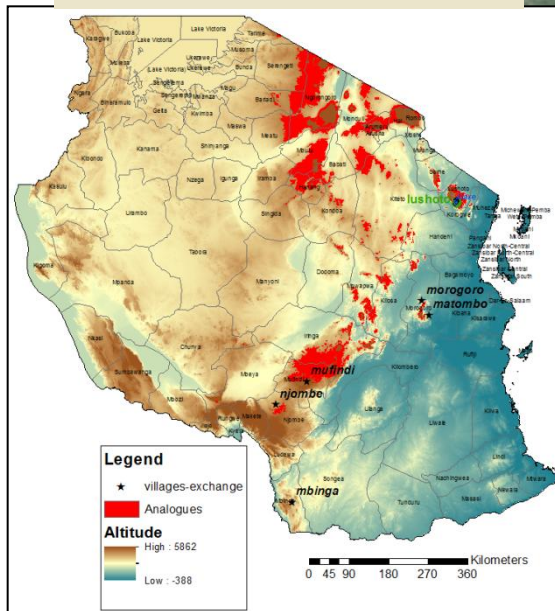
Three ongoing pilots



Farms of the future

Taking the analogue concept to the field

Tanzania



Farms of the future

Journey to Yamba's plausible futures

Analogue study Tour
Villages visited



Systemic Framework for Integrated Adaptation Planning

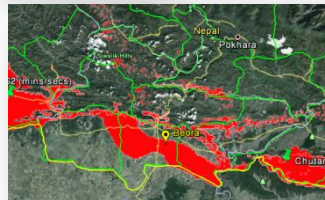
Partners: University of Adelaide and the University of Oxford

- Integrated program of research into the resilience and adaptive capacity of socio-ecological systems to climate change across social, institutional, economic and environmental scales and levels.
- Research program designed to be embedded in a collaborative network of governmental, non-governmental, community based and academic organizations from field to international scales

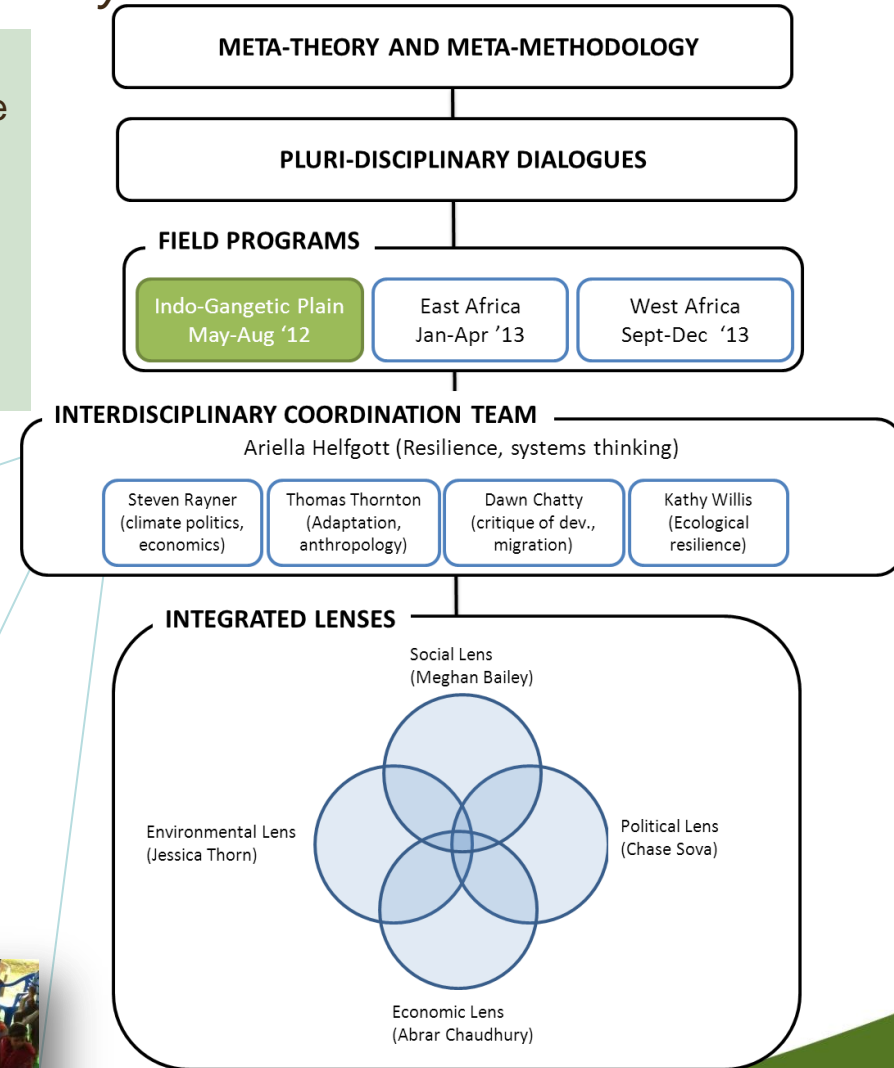
To Date: Methodological framework for each lens and conceptual framework for cross-cutting integration



Pilot testing and designing 'grounding' framework for Climate Analogues Tool (Farms of the Future)



Nepal Field Program with activities at local, regional and national levels (workshops, interviews, surveys, mapping exercises etc)



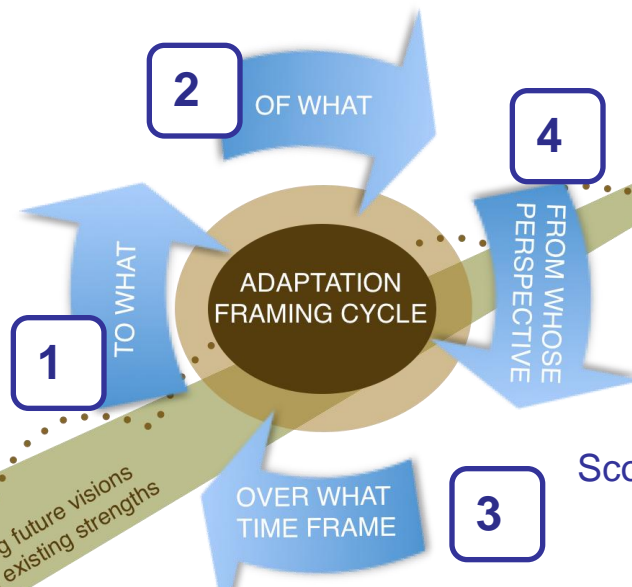
Farms of the future

Enabling farmers adaptation learning across analogue sites in Nepal

Participatory process to chose socially and culturally appropriate exchange locations and perform system analysis



Key environmental challenges and vulnerabilities



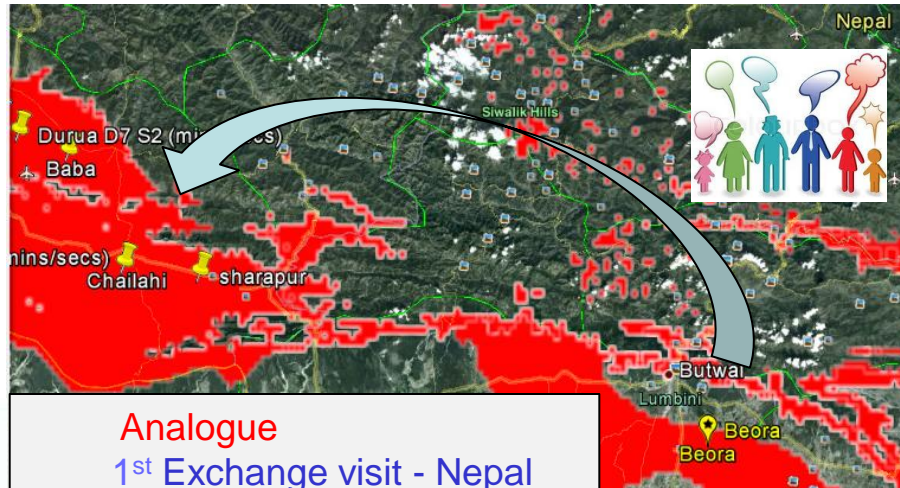
Local values and visions and aspirations for the future

Scope of the system under examination



Farms of the future

Journey Beora's plausible futures



Analogue

1st Exchange visit - Nepal
Chitwan - Beohra

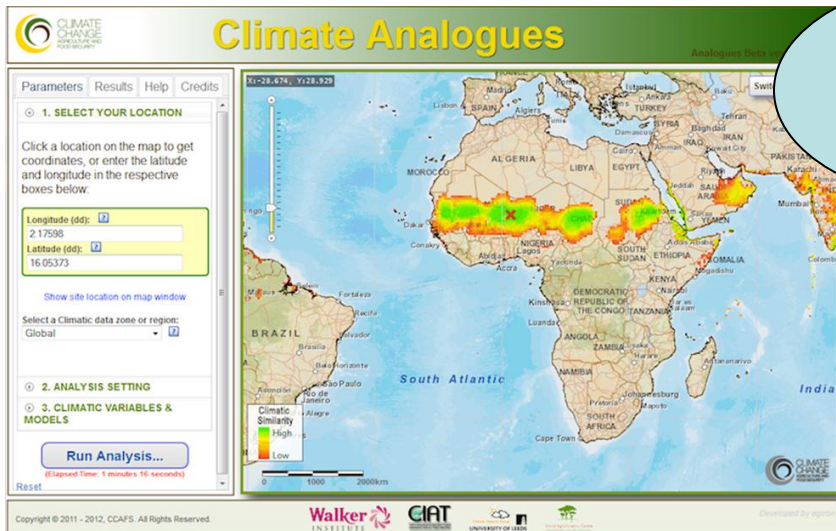


Blog story: <http://www.trust.org/alertnet/blogs/climate-conversations/finding-the-future-of-beora/>

Analogue Tool: Finding Tomorrow's agriculture today

Methodology development

Regional trainings



Katmandu
Dakar
Nairobi



<http://gismap.ciat.cgiar.org/Analogues/>

- 15 countries
- 70 local researchers
- WP: [Climate Analogues: Finding tomorrow's agriculture today](#)



More information

Farms of the Future: <http://ccaafs.cgiar.org/our-work/research-themes/progressive-adaptation/farms-future>

CCAFS working paper :

<http://ccaafs.cgiar.org/sites/default/files/assets/docs/ccaafs-wp-12-climate-analogues-web.pdf>

Blogs: <http://ccaafs.cgiar.org/blog/finding-future-farmers-beora-nepal>
<http://ccaafs.cgiar.org/blog/one-mans-future-another-mans-present-farms-future-hits-tanzania>

Analogue tool: <http://gismap.ciat.cgiar.org/analogues/>

Press release: <http://ccaafs.cgiar.org/news/media-centre/climateanalogues>